

S6KE (KNX)

4-inch KNX Smart Control Panel Specifications

■ Version update instructions

Version	Update content	Creator	Date
V1.0	First Version	Engineer Team	June 17, 2024
V2.0	Update description of KNX wiring schematics	Engineer Team	June 24, 2024
V3.0	Updated powering instructions and weights.	Engineer Team	September 19, 2024
V4.0	Increase the number of supported devices and scenarios	Engineer Team	May 23, 2025

Contents

Chapter 1 Product Introduction	2
1.1 Product Appearance	2
1.2 Product Functions	2
Chapter 2 Product Parameters and Key Dimensions	3
2.1 Parameter Specifications	3
2.2 Key Dimensions	4
Chapter 3 Interface Description	5
3.1 Interface Description	5
3.2 KNX Wiring Diagram	7
Chapter 4 Installation Diagram and Instructions	8
4.1 Installation Diagram	8
4.2 Installation Instructions	9
Chapter 5 Product Instructions	10
5.1 Safety Instructions	10
5.2 Product KNX Configuration Instructions*** To be updated	10

Chapter 1 Product Introduction

1.1 Product Appearance



1.2 Product Functions

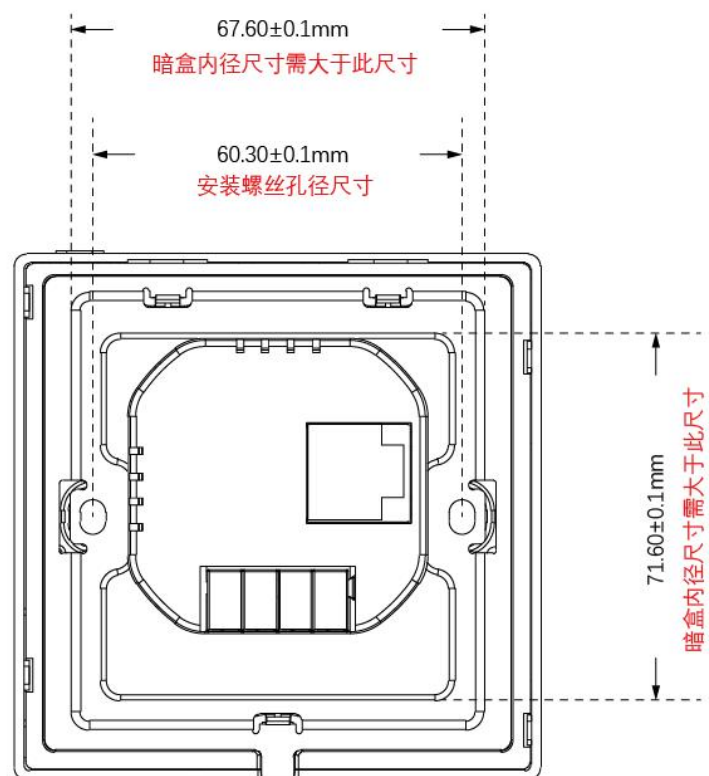
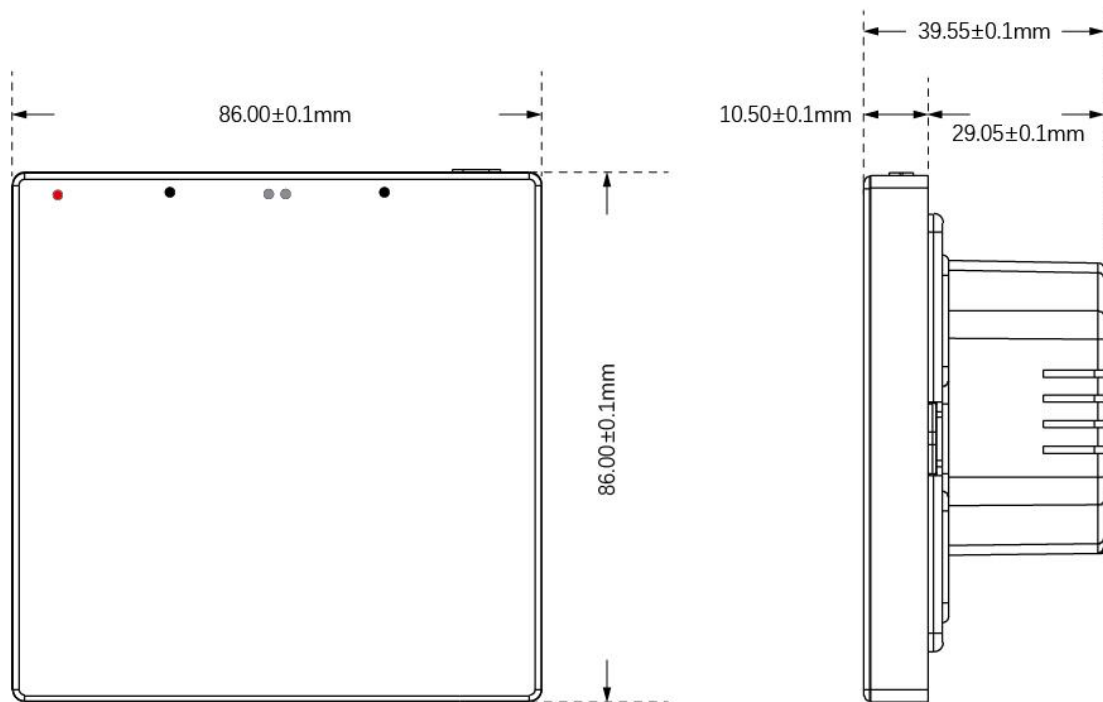
- 4-inch LCD, 2.5D full screen, dual array microphone noise reduction, brightness sensor, 1W speaker.
- Universal 86-type panel size, wall-mounted concealed installation, easy installation, no need to modify the wall.
- KNX bus control can realize the control of switches, lights, curtains, air conditioners, fans, and other smart devices.
- Smart home interconnection, custom scene mode, touch the panel to wake up, and quickly switch scene modes.
- Functions of the side push button : reset, screen and microphones ON/OFF protect users' privacy.

Chapter 2 Product Parameters and Key Dimensions

2.1 Parameter Specifications

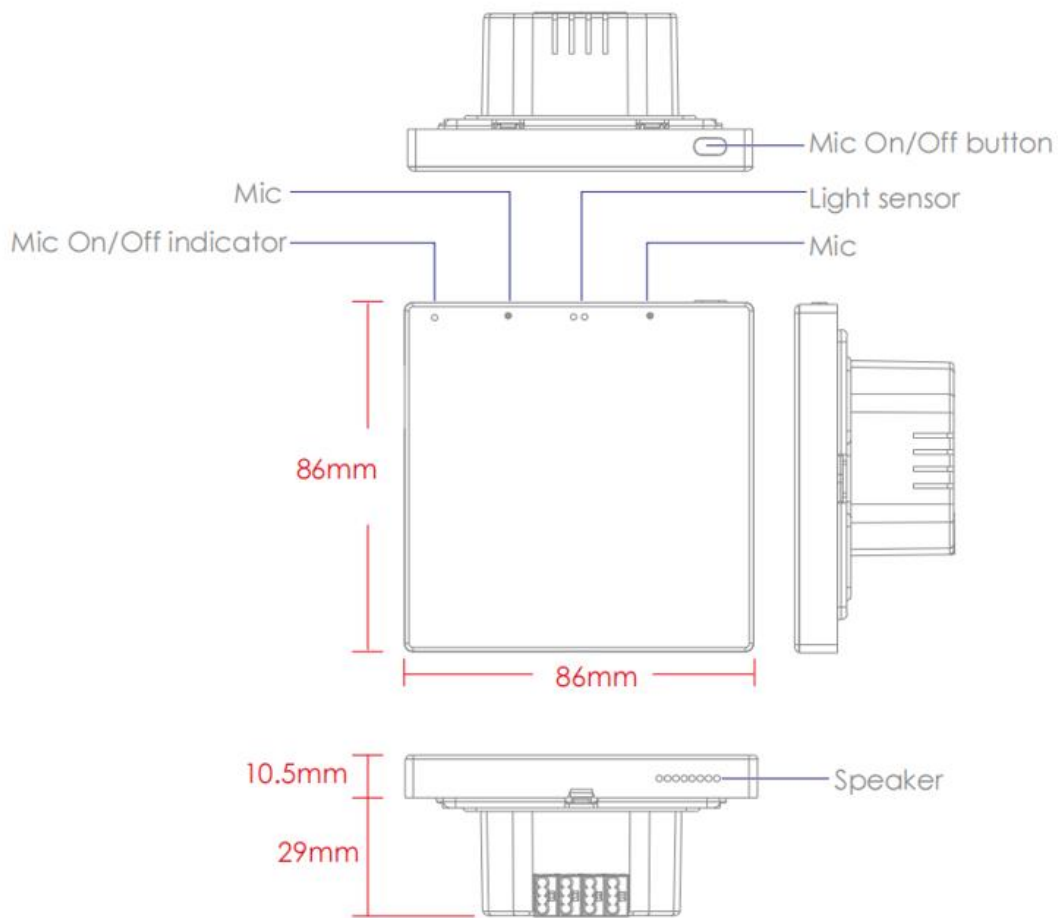
Function	Parameter Specifications	
CPU	PX30 Quad-core Cortex-A35	
RAM	2G, LPDDR4	
ROM	8G, eMMC	
Screen	4 inches 480*480, 2.5D touch screen	
System	Android 11	
Microphone	Dual Microphone Line Array	
Speaker	8ohm 1W	
BLE	BT 5.4, BLE5.4	
Sensors	Brightness, Proximity	
Ethernet	100M network	
WIFI	2.4&5GHz, 802.11a/b/g/n/ac/ax	
KNX Control	Support scenes	≤ 150 scenes
	Support devices	≤ 150 devices
	Devices type	Switch, dimming Light, color temperature light, RGB light, roller blinds, sliding curtains, air conditioners, underfloor heating, fresh air ventilators
Working voltage	21-30V DC	
Working temperature	0°C~40°C	
Storage temperature	-20°C~60°C	
Working humidity	≤90% RH	
Net weight	176g	
Dimensions	86x86x10.5mm (Without back base) 86x86x39.5mm (With back base)	

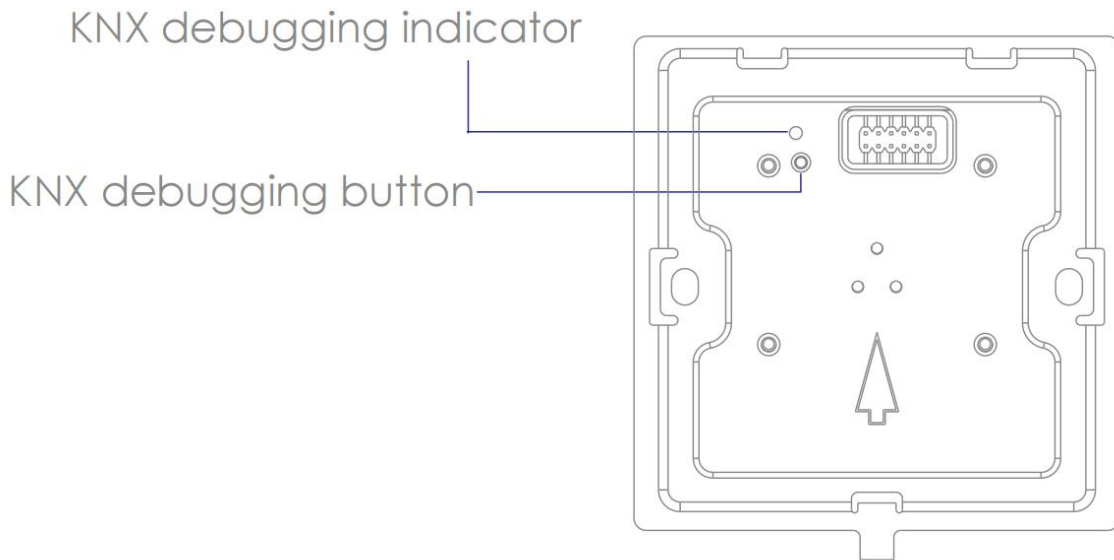
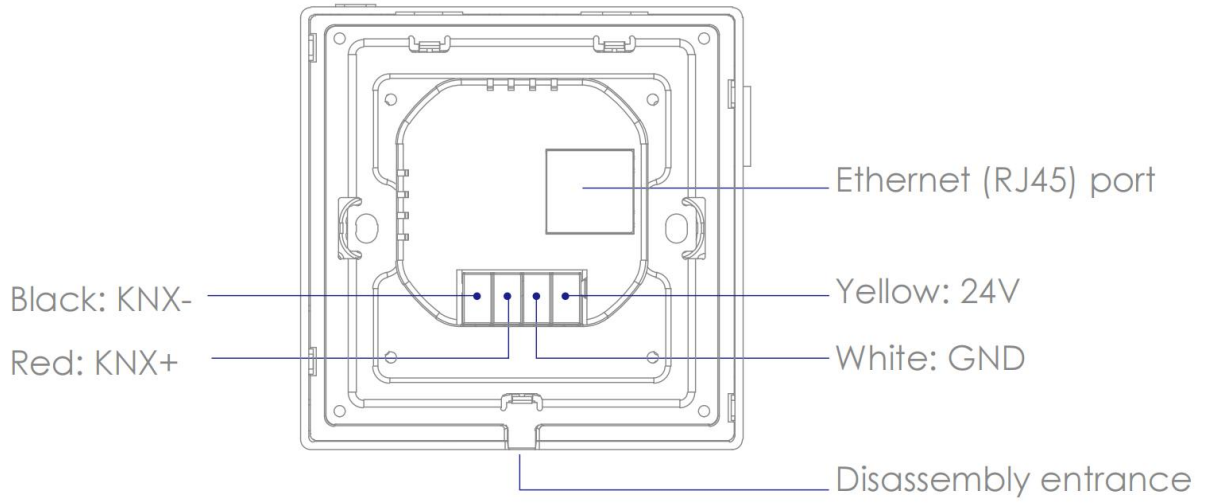
2.2 Key Dimension



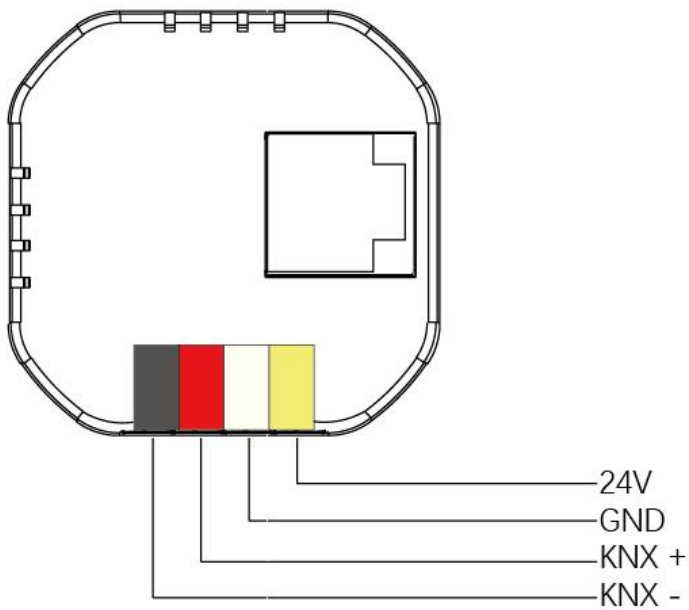
Chapter 3 Interface Description

3.1 Interface Description





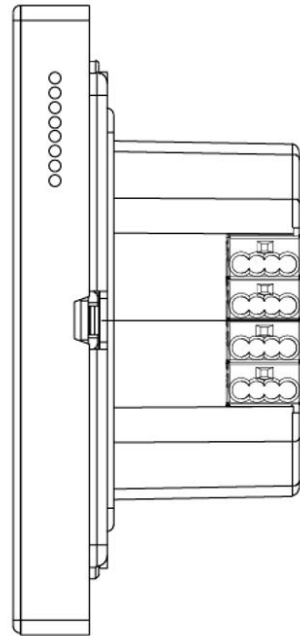
3.2 KNX Wiring Diagram



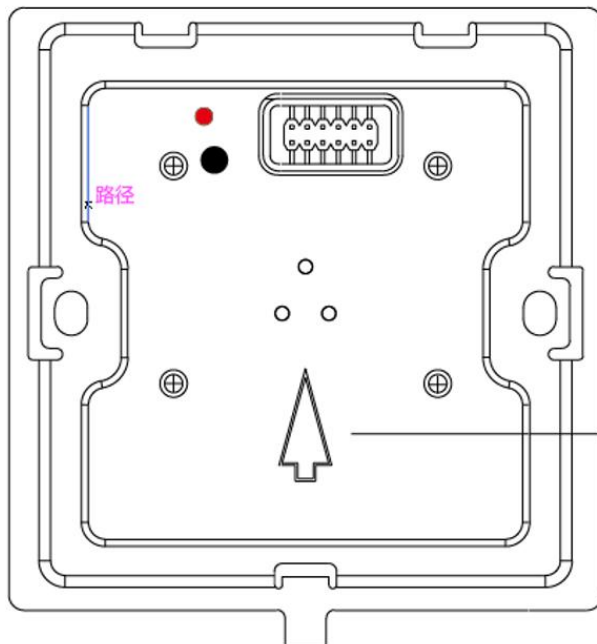
- The Red and Black terminals are KNX bus interfaces, and the Yellow and White terminals are auxiliary power supply interfaces.
- Black: KNX -, Red: KNX +; White: GND, Yellow: DC 24V input.
- The network port is a standard RJ45 network port.

Chapter 4 Installation Diagram and Instructions

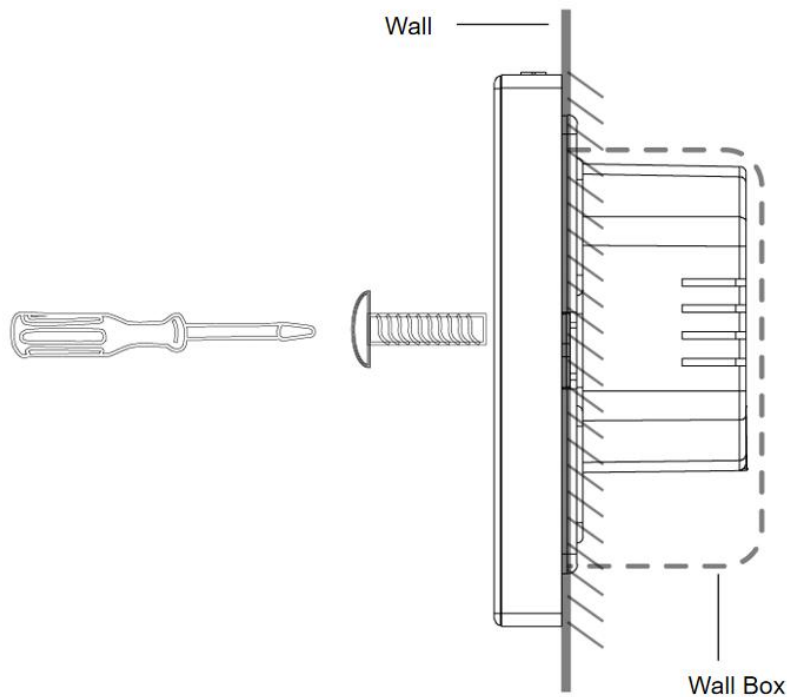
4.1 Installation Diagram



Use a flat-blade screwdriver to insert and pry it open to the left and right.



Install with the arrow pointing upwards



4.2 Installation Instructions

- Use a flat-blade screwdriver to remove the product bracket and back base, and install them in the wall box.
- Check the wiring and confirm that the KNX cable and power cable are in good contact with the wiring terminals of the back base, and the cables are not falling off.
- Use the mounting screws in the accessory package to lock the bracket base on the wall box, ensure that the bracket is flush with the wall, and then gently press and snap the panel together.
- Note that during the installation of the bracket, the mounting screws should not be tightened too much to avoid deformation of the bracket or damage to the screen and hardware.
- If you encounter problems during installation, do not press hard to force the installation. You should first level the wall and check the flatness of the bracket.

Chapter 5 Product Instructions

5.1 Safety Instructions

- To ensure the correct use of this product, this product must be installed or removed by a professional electrician.
- Before installing or removing this product, the main power switch must be turned off to prevent electric shock.
- This product must be kept away from fire and water during installation and use.
- This product cannot be used in a humid environment (such as a bathroom).

5.2 Product KNX Configuration Instructions*** **To be updated**